

BARMAN TRAY



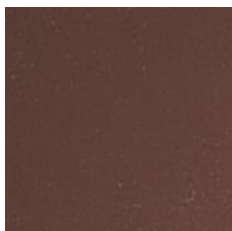
Reinforced fibreglass polyester tray with non-slip rubber surface

- Suitable for bar, restaurants and hotels.
- Especially suitable for serving and for clearing up tables.
- Special **non-slip** coating guarantees excellent performance, even when wet.
- Rubber coating on top surface: preventing ungluing at the rim.
- Washable in **dishwasher**, even at frequent intervals.
- Extremely tough and suitable for intensive use.
- With reinforced corners and edges.
- **Guaranteed 5 years** against breakage.
- Perfectly flat.
- It does not warp at high and low temperatures.
- Featuring stacking lugs, for easier drying and quick, accurate stacking.
- Thanks to high quality raw materials and to innovative production technology, the Barman tray is a durable product.

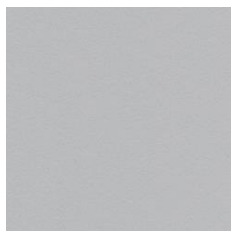
TECHNICAL CHARACTERISTICS

Model	Code	External dim. (mm)	Packaging (no. of pieces)
Standardised flat edge			
Gastronorm	1804 + col.	530x325 mm	20
Rectangular rounded corners			
14.18	1518 + col.	455x354 mm	24
Round			
6.28	1628 + col.	dia. 280 mm	24
6.35	1635 + col.	dia. 355 mm	30

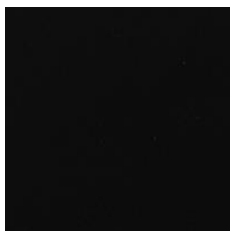
AVAILABLE COLOURS



Brown 051



Frisia Grey 043



Black 050

Usage intensity	Impact resistance	Heat resistance	Stain resistance	Scratch resistance	Washability	Washing Temperatures	Rising and drying	Customisations
Maximum	Maximum	Fair	Good	Good	Dishwasher	Max +60°C	Max +90°C	Not available

